



THE DREAM SCHOOLYARD

Jambette.com

Dream Big

The schoolyard is both the heart of the primary school and at the heart of child development. In fact, it is a common area where children spend several hours a week learning how to live together.

The schoolyard fosters the learning of many personal and social skills: communication, cooperation, mutual aid, excelling, negotiation, respecting differences, etc. Therefore, it is essential to create a schoolyard layout that offers children spaces that will be stimulating and inspiring.

At Jambette, we see an opportunity to let our creative juices flow and innovate to do more and do it better.

WOW!



To foster the overall development of youth, there should be a variety of activity zones in the schoolyard. Creating different zones allows youth to have access to a variety of equipment and surfaces, which helps strengthen all dimensions of their development.¹

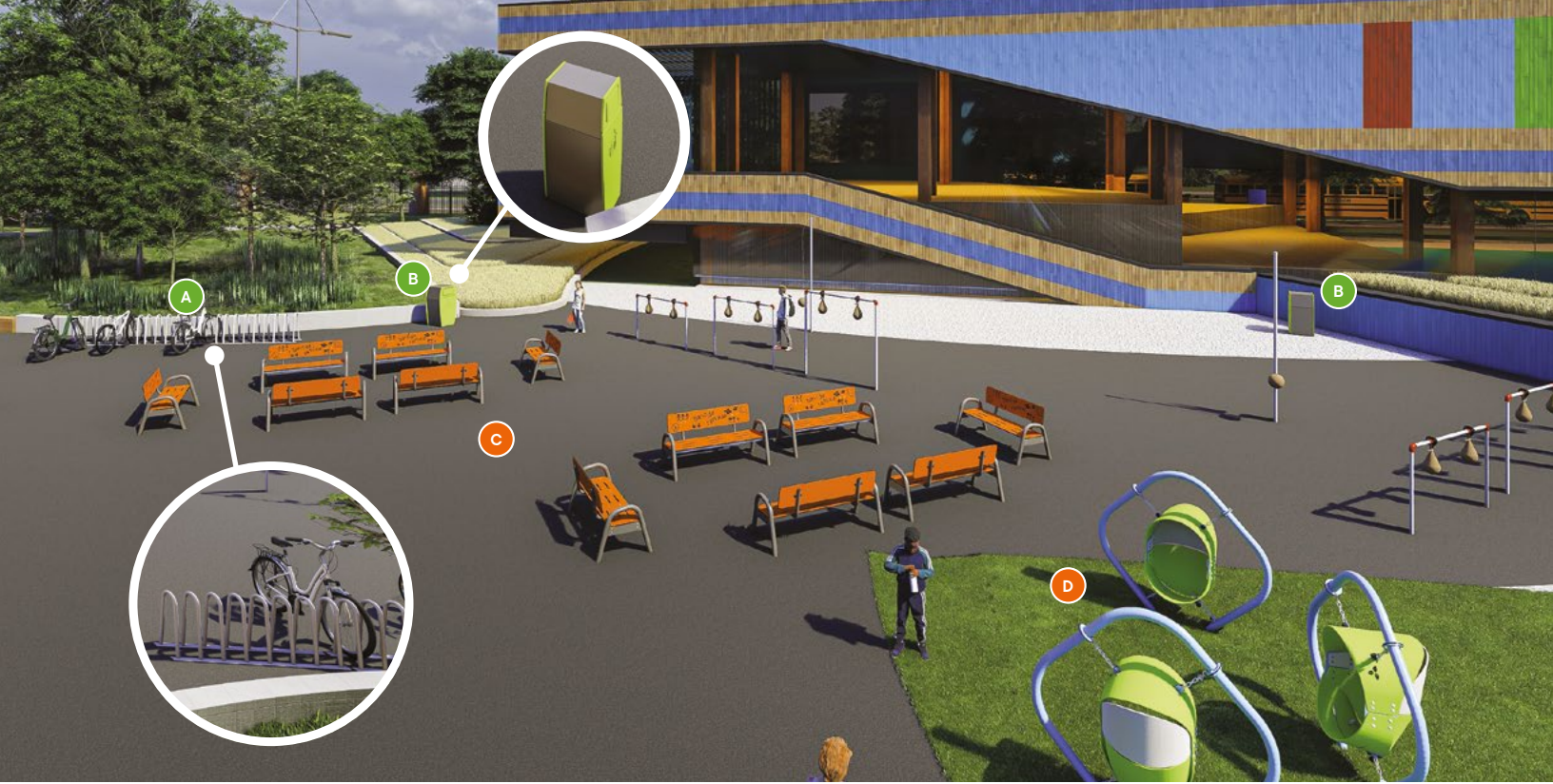
It should be noted that one activity zone can be found in more than one area of the yard, just like a zone can serve several purposes. For example, the outdoor classroom zone could also be used as a rest zone or a zone for arts and shows.

ZONES

- 1 Welcome
- 2 Socialization • Rest
- 3 Creation
- 4 Kindergarten
- 5 Physical play
- 6 Group play – Grades 1-2
- 7 Group play – Grades 3-4 and Grades 5-6
- 8 Play structures
- 9 Arts and shows • Outdoor classroom
- 10 Individual or small group play
- 11 Calm play



¹ Guide to creating a primary schoolyard



ZONE 1

Welcome

- A H-13019**
The bike rack 7 places
- B H-13013**
The waste basket
Closed model
(with swing door)

ZONE 2

Socialization Rest

- C H-14000**
The benche with back
- D L-19080**
The suspended nest

ZONE 3

Creation

- E L-18043**
The spinning chair
- F L-19038-A**
The creative space
- G A-16000**
The villa

ZONE 4

Kindergarten

- H J3-18050-A**
The play structure



ZONE 5

Physical play

- A J2-19085-5B**
The play structure
- B G-18012**
The Tree
- C L-09001**
The spinner Xyrä-35
- D L-19046-B**
Double modslide hill slide
- E J6-17006-5BP**
The manta climber





ZONE 6

Group play – Grades 1-2

- A L-06013**
The arched swing sets 8 places
- B J-18004**
The toddler sports unit



ZONE 7

Group play – Grades 3-4 and Grades 5-6

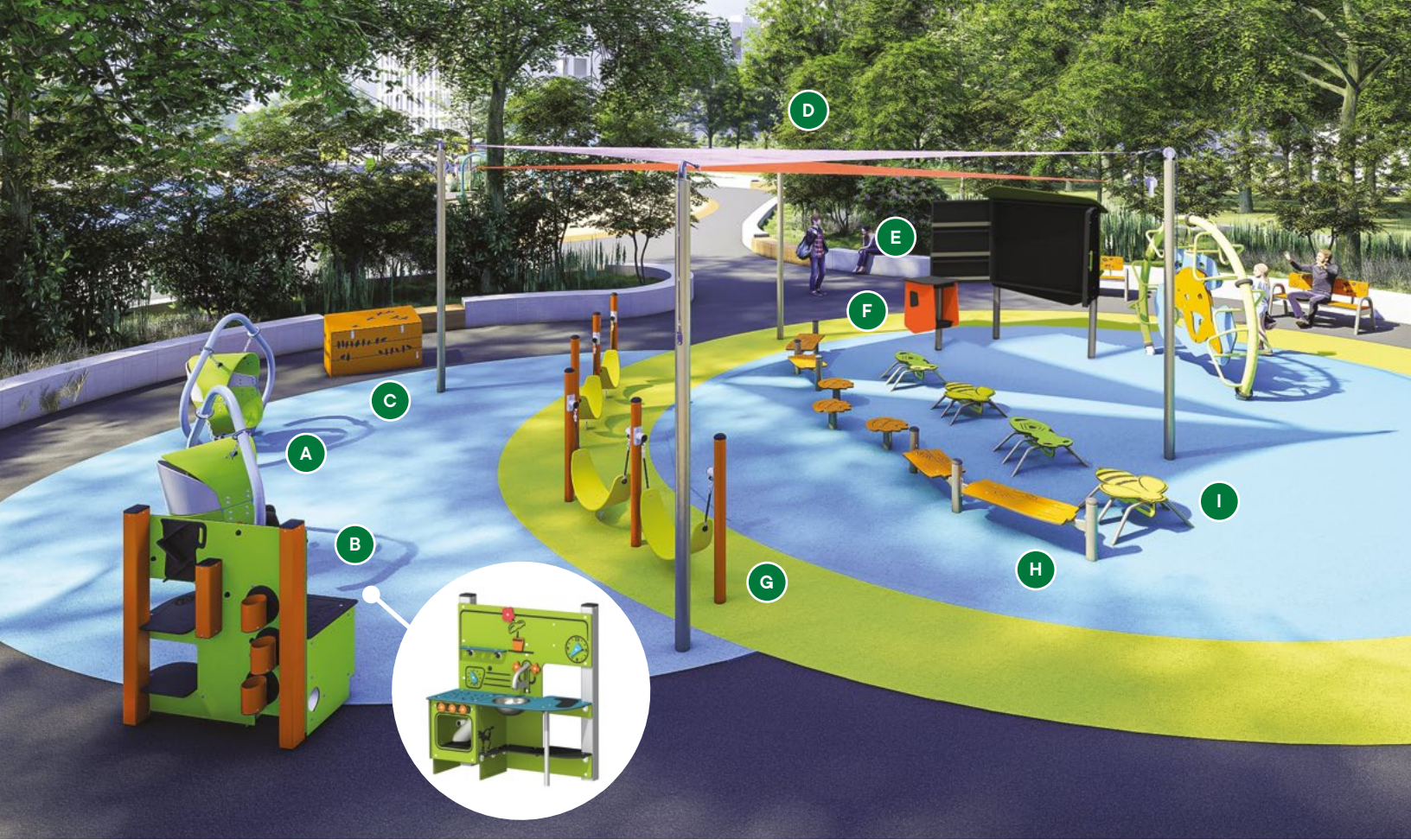
- C MU-16008-B**
The Müel multisport
- D J-18004**
The toddler sports unit
- E H-14000**
The benche with back

ZONE 8

Play structures

- A CX-19002-5B**
The Citiplex
- B J6-19001-5B**
The manta climber
- C L-13004**
The standing Teeter Totter
- D J6-19001-5B**
The manta climber





ZONE 10

Individual or small group play

A Individual or small group play

ZONE 11

Calm play

B L-9210-B2
6' punching balls

C LA-8601
The tetherball

D L-99212
5' punching balls

ZONE 9

Arts and shows •
Outdoor classroom

A L-19080
The suspended nest

B A-18000
The kitchenette

C C-17000
The toy box

D S-5000
The shade sails

E A-20000
The chalkboard panel with doors

F A-20002
The side table

G L-19090-B
The double freestanding hammock

H L-19082-A
The benches

I G-20000
The worker bee on the ground

J G-14006
The whale iris

K L-09001
The spinner Xyrä-35

L LA-16006
The eco-mobile spring rider





SWEET!



Jambette.com

700, rue des Calfats
Lévis, Québec
G6Y 9E6
Canada

Tel: 418-837-8246
Toll-free: 1-877-363-2687
Fax: 418-837-2916

jambette.com

PRINTED IN CANADA